



Chicago Illinois USA www.brooklinemfg.com

**SureStop® Installation Template**  
**CONCEALED STOPS & HOLDERS**  
**1505F (FRICTION)**  
**1505H (HOLD OPEN)**  
**1505S (STOP)**

**TEMPLATE NO. T1505**  
**T1505 Rev. 1 12/99**  
 Dimensions in inches

For metric dimensions, see Template T1505m

**Installation Instructions**

1. Determine the degree of Hold Open or Dead Stop required. Select proper dimensions from table on page 2.

**Note:** Dead Stop is the maximum opening point of the stop with maximum spring compression.

When Dead Stop is required add 5/8" to "A" dimension.

A, B and C dimensions are measured from hinge or pivot centerline, not door edge.

2. Locate "B" dimension on frame and mortise 3/16" deep for jamb bracket as shown.

3. Locate "A" and "F" dimensions on centerline of door and mortise 13/16" wide x 7/8" deep for channel.

Adjust the arm and rail cutout dimensions if the head clearance varies. 1/16" head clearance is shown in illustration.

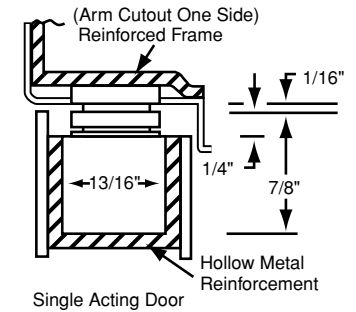
4. Locate "C" and "E" dimensions on top of door and mortise 1/4" deep as shown for arm clearance.

5. Install Stop or Holder with hardware provided.

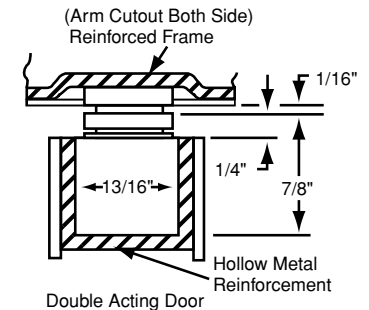
**NOTES:**

\* All hollow metal frames to have 3/16" min. thickness x 12" min. length reinforcing plates as shown in illustration.

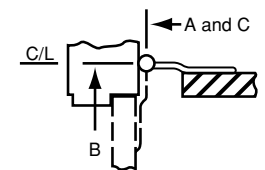
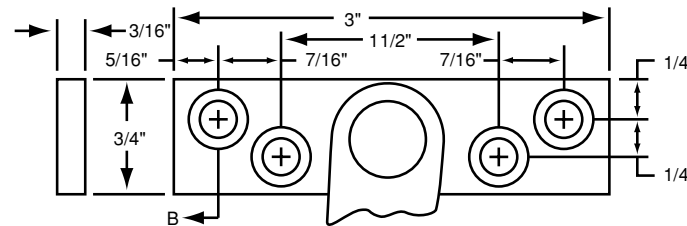
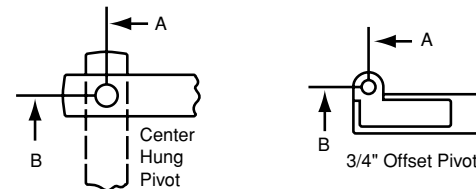
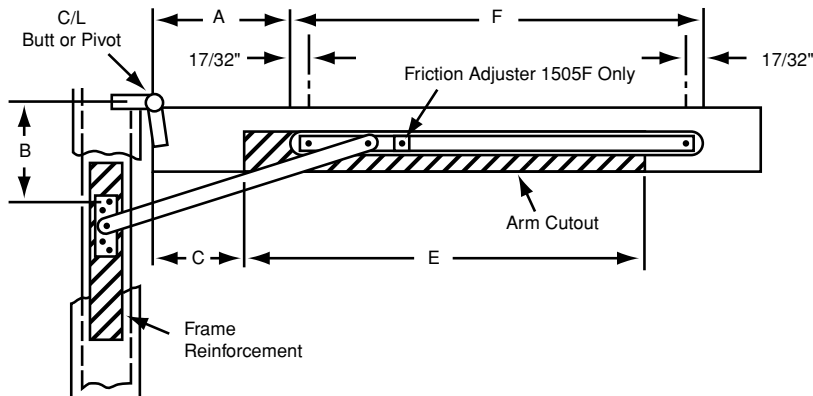
\* Be aware of the clearance behind the door. Do not forget to take the hardware projection into your calculation.



Single Acting Door



Double Acting Door



Fastener Information	
Jamb	Door
#12-24 x 1/2" FHMS	#12-24 x 1-1/2" FHMS
or	or
#12 x 1-1/2" FHWS	#12 x 1-1/2" FHWS
(4 locations)	(2 locations)

**CAUTION:**  
 Note location of swing clear hinge centerline to determine "A" and "B" dimensions.



Chicago Illinois USA www.brooklinemfg.com

**SureStop® Installation Template**  
**CONCEALED STOPS & HOLDERS**  
**1505F (FRICTION)**  
**1505H (HOLD OPEN)**  
**1505S (STOP)**

**TEMPLATE NO. T1505**  
**T1505 Rev. 1 12/99**  
 Dimensions in inches

For metric dimensions, see Template T1505m

**Notes:**

1. This page (2) is for door and jamb preparation. See page 1 for installation instructions
2. Model numbers: Suffix "F" = Friction; "H" = Hold Open; "S" = Stop  
 Suffixes A, B, C, D and E indicate Size
3. A, B and C dimensions from C/L of pivot, not door edge.
4. Dead Stop is the maximum opening point with maximum spring compression.  
 When Dead Stop is required add 5/8" to "A" dimension.

Check pivot manufacturer's compatibility prior to specifying Center Hung Pivots

\* Butt mounting only  
 Reversible / non-handed

**1 3/4 - 2 1/4 Butts & 3/4 Offset Pivot**

Model			Open Angle	85° HO				90° HO				95° HO				100° HO				105° HO				110° HO				
Friction	Hold-Open	Stop	Door Opening	A	B	C	E	A	B	C	E	A	B	C	E	A	B	C	E	A	B	C	E	A	B	C	E	F
1505FA	1505HA	1505SA	*18 - 24	2 5/16	4 5/8	1 1/2	13 13/16	2	4 5/16	1 1/2	13 9/16	1 13/16	4 1/8	1 1/2	13 5/16	1 9/16	3 7/8	0	14 7/16	1 3/8	3 11/16	0	14 3/8	1 3/16	3 1/2	0	14 3/16	4 3/4
1505FB	1505HB	1505SB	24 1/16-30	6 1/2	5 13/16	5 1/2	15 3/16	6 3/16	5 1/2	5 1/2	14 13/16	5 13/16	5 1/8	5 1/2	14 1/2	5 1/2	4 13/16	5	14 11/16	5 1/4	4 9/16	4 3/4	14 11/16	5 1/16	4 3/8	4 1/2	14 9/16	15 7/8
1505FC	1505HC	1505SC	30 1/16-36	9 11/16	7 3/8	7 1/2	18	9 1/4	6 15/16	7	18 1/16	8 13/16	6 1/2	6 3/4	17 7/8	8 7/16	6 1/8	6	18 1/4	8 1/8	5 13/16	6	18 1/16	7 7/8	5 9/16	5 3/4	17 15/16	17 11/16
1505FD	1505HD	1505SD	36 1/16-42	13 5/16	9 1/2	9 1/2	22 1/8	12 3/4	8 15/16	9	22 1/16	12 1/4	8 7/16	8 1/2	22 1/16	11 3/4	7 15/16	8	22 1/16	11 3/8	7 9/16	7 3/4	21 15/16	11	7 3/16	7 3/8	21 15/16	20 3/16
1505FE	1505HE	1505SE	42 1/16-48	17 5/8	11 1/16	11	25 11/16	17	10 7/16	10 1/2	26 9/16	16 3/8	9 13/16	10	26 7/16	15 13/16	9 1/4	9 1/4	26 5/8	15 3/8	8 13/16	9	26 7/16	14 15/16	8 3/8	8 1/2	26 1/2	21 15/16

**1 3/8 - 1 5/8 Butts & 3/4 Offset Pivot**

Model			Open Angle	85° HO				90° HO				95° HO				100° HO				105° HO				110° HO				
Friction	Hold-Open	Stop	Door Opening	A	B	C	E	A	B	C	E	A	B	C	E	A	B	C	E	A	B	C	E	A	B	C	E	F
1505FA	1505HA	1505SA	*18 - 24	2 5/16	4 11/16	1 1/2	13 7/16	2 1/16	4 7/16	1 1/2	13 7/16	1 13/16	4 3/16	1 1/2	13 3/16	1 5/8	4	0	14 1/2	1 7/16	3 13/16	0	14 5/16	1 1/4	3 5/8	0	14 1/8	14 3/4
1505FB	1505HB	1505SB	24 1/16-30	6 11/16	5 15/16	5 1/2	15 3/16	6 1/4	5 1/2	5 1/2	14 3/4	5 15/16	5 3/16	5 1/4	14 11/16	5 5/8	4 7/8	5	14 7/8	5 3/8	4 5/8	4 3/4	14 5/8	5 1/8	4 3/8	4 1/2	14 5/8	15 7/8
1505FC	1505HC	1505SC	30 1/16-36	9 3/4	7 7/16	7 1/2	18 3/16	9 5/16	7	7	18 1/8	8 15/16	6 5/8	6 3/4	18	8 9/16	6 1/4	6 1/4	18 1/8	8 1/4	5 15/16	6	18	7 15/16	5 5/8	5 3/4	18	17 11/16
1505FD	1505HD	1505SD	36 1/16-42	13 7/16	9 5/8	9 3/4	22	12 7/8	9 1/16	9	22 3/16	12 3/8	8 9/16	8 1/2	22 3/16	11 7/8	8 1/16	8	22	11 1/2	7 11/16	7 3/4	22	11 3/16	7 3/8	7 1/2	21 7/8	20 3/16
1505FE	1505HE	1505SE	42 1/16-48	17 3/4	11 3/16	11 1/4	26 7/16	17 1/16	10 1/2	10 1/2	26 1/2	16 7/16	9 7/8	10	26 3/8	15 15/16	9 3/8	9 1/2	26 3/8	15 1/2	8 15/16	9	26 1/2	15 1/16	8 1/2	8 1/2	26 1/2	21 15/16

**Center Hung Pivot**

Model			Open Angle	85° HO				90° HO				95° HO				100° HO				105° HO				110° HO				
Friction	Hold-Open	Stop	Door Opening	A	B	C	E	A	B	C	E	A	B	C	E	A	B	C	E	A	B	C	E	A	B	C	E	F
--	--	--	--	--	--	--	--	--	--	--	--	--	--	--	--	--	--	--	--	--	--	--	--	--	--	--	--	--
1505FB	1505HB	1505SB	27 - 32	7	6 1/4	5	15 7/8	6 5/8	5 7/8	5	15 1/2	--	--	--	--	--	--	--	--	--	--	--	--	--	--	--	--	15 7/8
1505FC	1505HC	1505SC	32 1/16-38 1/2	10 3/16	7 7/8	8	17 7/8	9 11/16	7 3/8	7 1/2	17 7/8	9 1/4	6 15/16	7	18	8 7/8	6 9/16	6 5/8	18	8 9/16	6 1/4	6 1/4	18	8 1/4	5 15/16	6	18	17 11/16
1505FD	1505HD	1505SD	38 9/16-45	13 13/16	10	10	22	13 9/16	9 3/8	9 1/2	22	12 11/16	8 7/8	9	22	12 3/16	8 3/8	8 1/2	22	11 13/16	8	8	22	11 7/16	7 5/8	7 3/4	22	20 3/16
1505FE	1505HE	1505SE	45 1/16-48	18 1/4	11 11/16	11 3/4	26 7/16	17 1/2	10 15/16	11	26 7/16	16 7/8	10 5/16	10 1/2	26 5/16	16 5/16	9 3/4	9 3/4	26 1/2	15 13/16	9 1/4	9 1/4	26 1/2	15 3/8	8 13/16	9	26 5/16	21 15/16